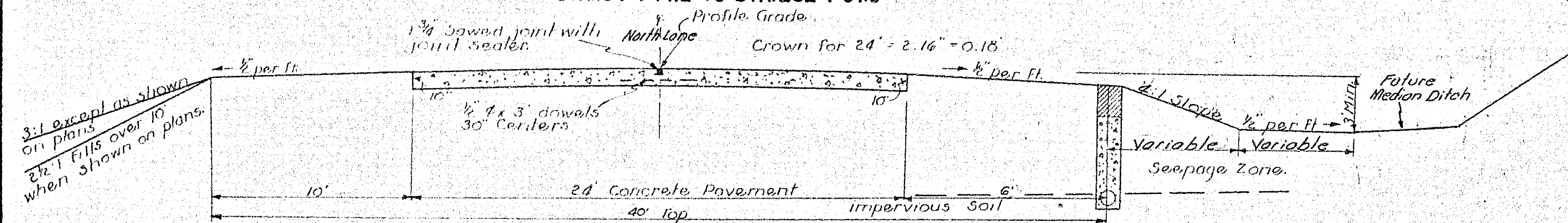


TYPICAL CROSS SECTION
(NORTH LANE)
STA. 11+72.9 TO STA. 84+16.2
STA. 98+50.0 TO STA. 127+75.0
STA. 134+77.2 TO STA. 232+07.8



3:1 except as shown
on plans
2 1/2" fills over 10'
when shown on plans.

Place approx. same width
of porous material on
each side of pipe. —

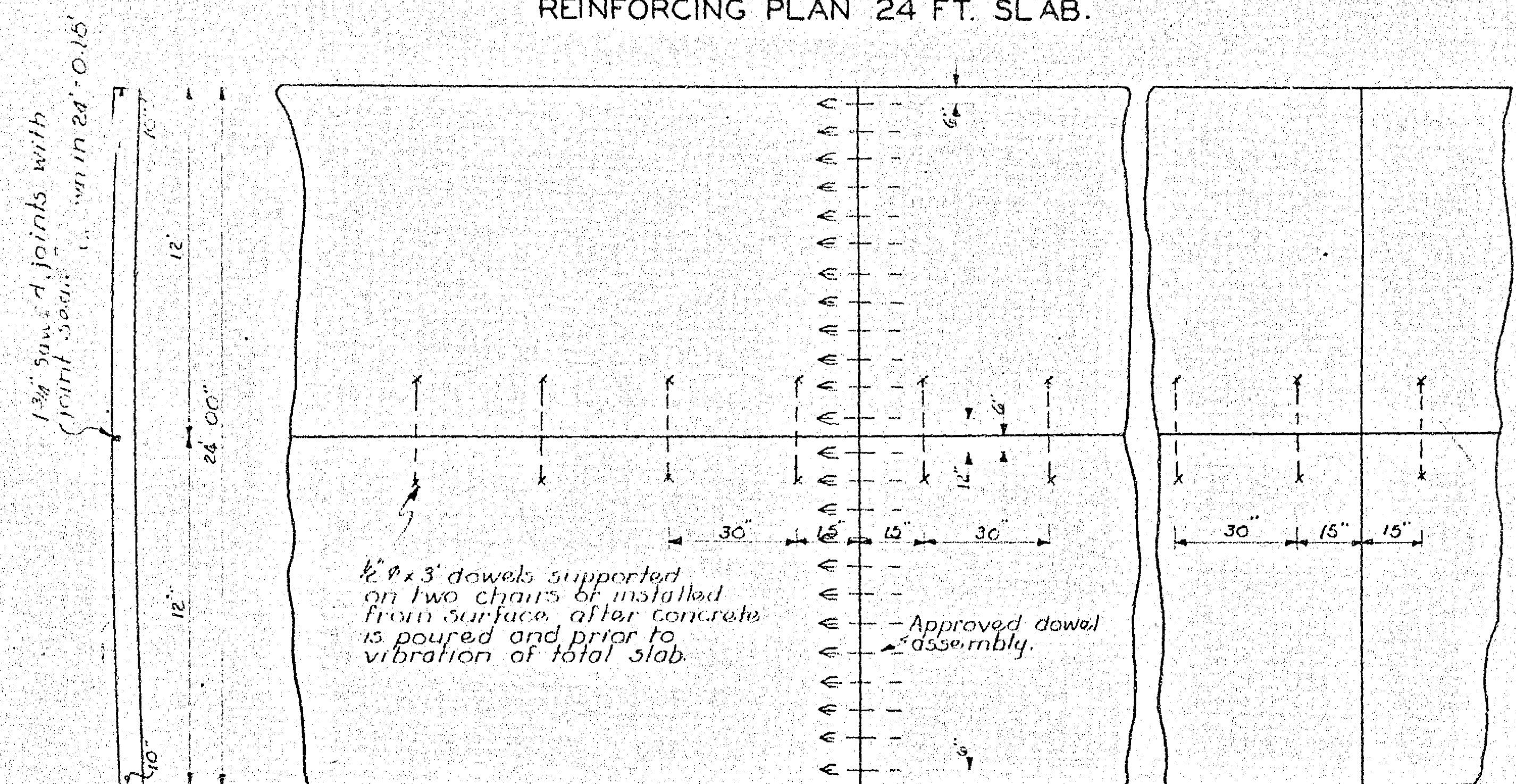
Under
where
plans.

Max. quantity of porous backfill material paid for shall not be greater than that necessary to fill a trench eighteen inches wide for trenches six ft. and less in depth or twenty four inches wide for trenches over six ft. in depth and to the depth specified.

SUPERELEVATED CURVES

Superelevated Curves to be built in accordance with AASHTO Standards of Geometric Design. For tabulation of Superelevated curves, see Sheet No. 2

REINFORCING PLAN 24 FT. SLAB



Expansion joints only as noted

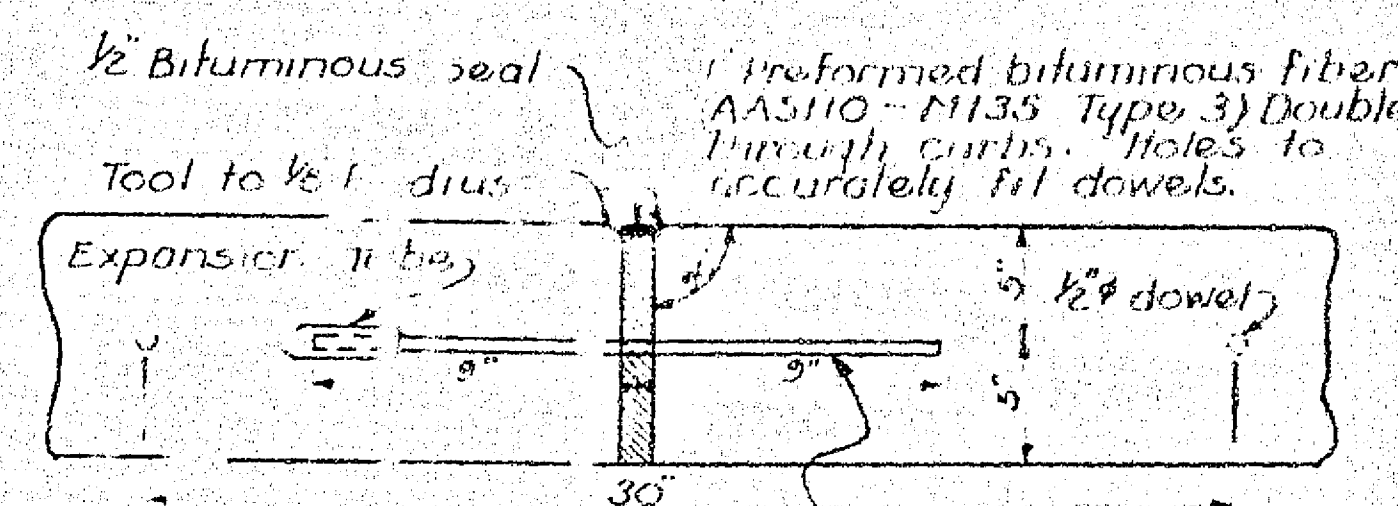
Contraction joints
at 20' centers.

General Requirements:

- 1- See details for special bridge approach slab and intersection areas.
- 2- See plans for location of expansion joints.
- 3- Standard contraction joint Spacing is 20 ft. (Min. 10 ft)

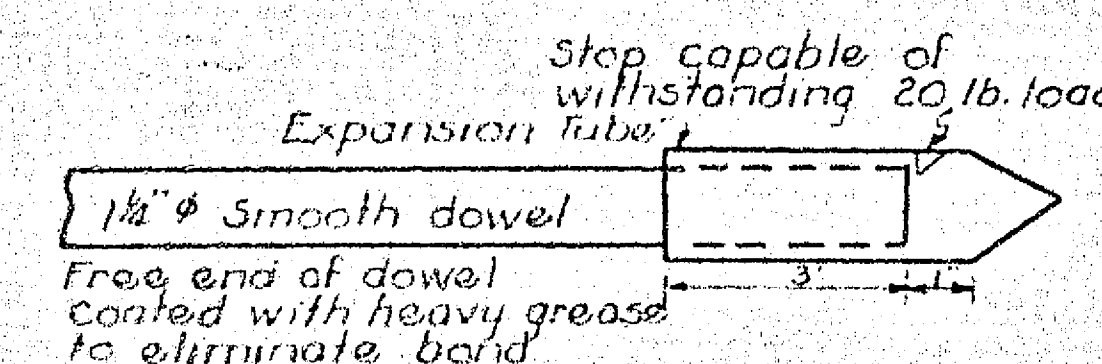
JOINT DETAILS

(Other joint details may be submitted for approval.)

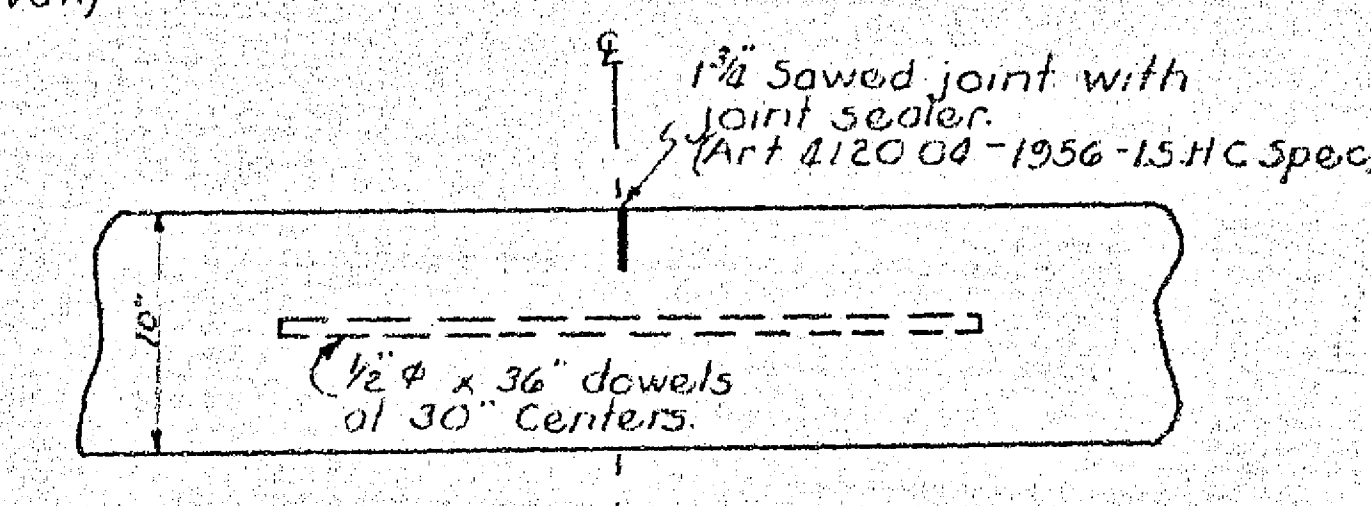


EXPANSION JOIN

1/2" ϕ x 18" smooth dowels at
12" centers. Use approved
dowel assembly. Coat
free end of dowel to
eliminate bond.

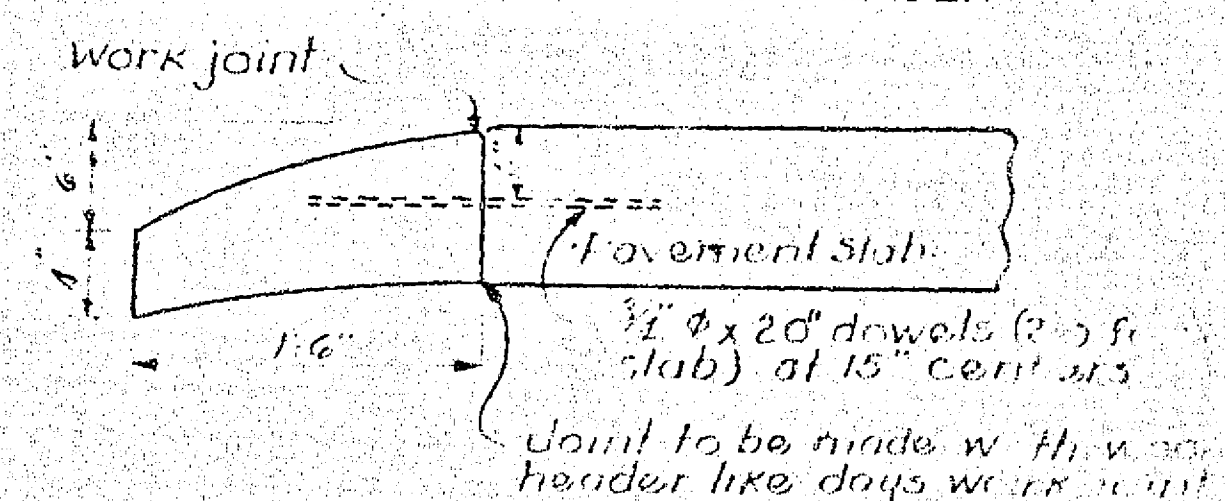


EXPANSION TUBE DETAIL



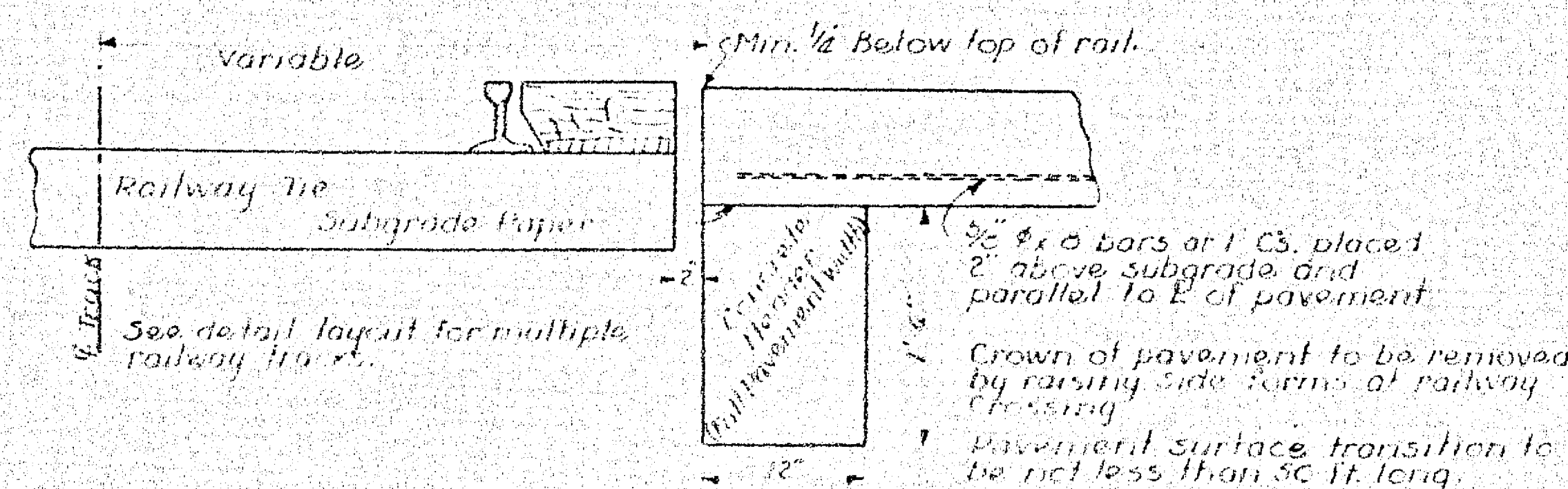
SAWED LONGITUDINAL JOINT

DETAILS OF CONCRETE HEADER

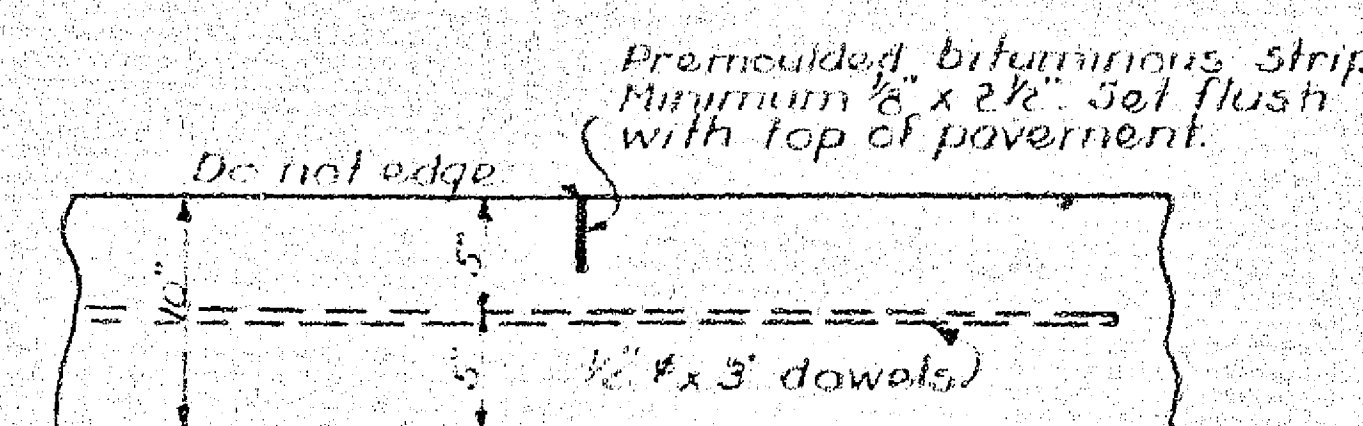


DETAILS OF RAILWAY GRADE CROSSING

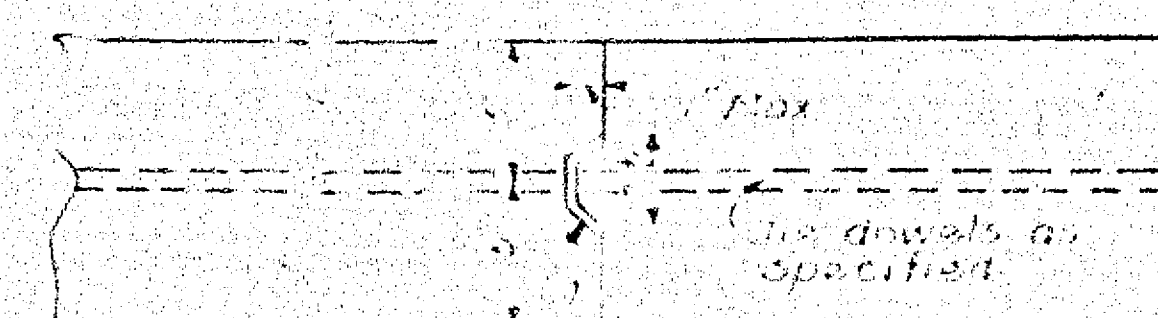
Two standard expansion joints shall be placed each side of the crossing. One 20' from the header and one 300' from the header.



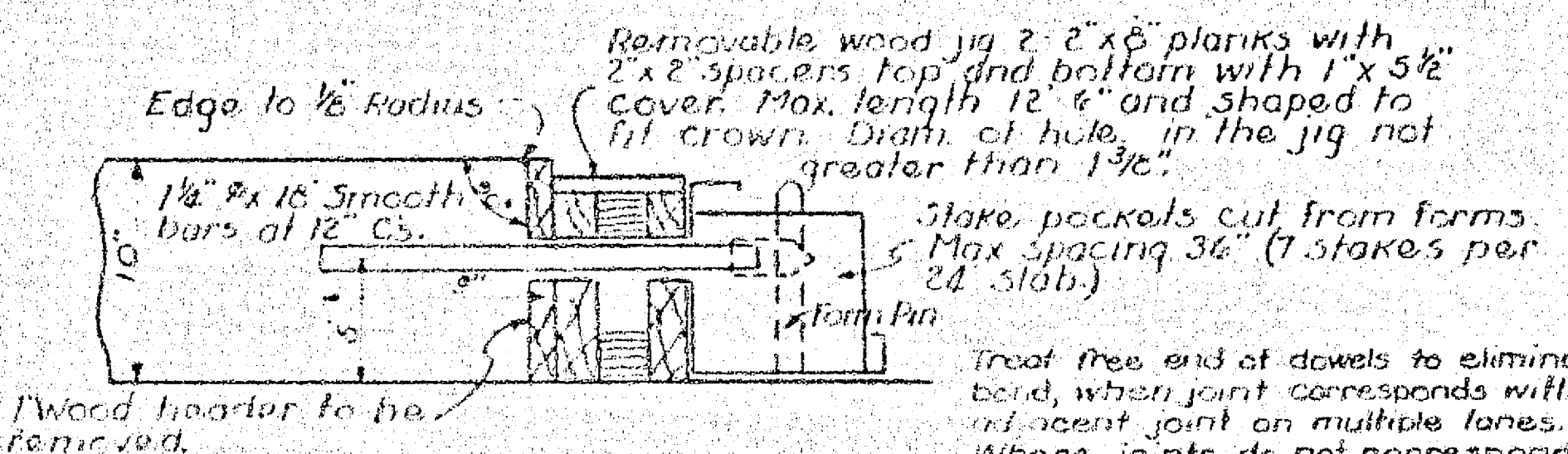
PARTING STRIP



K D JOINT DETAILS

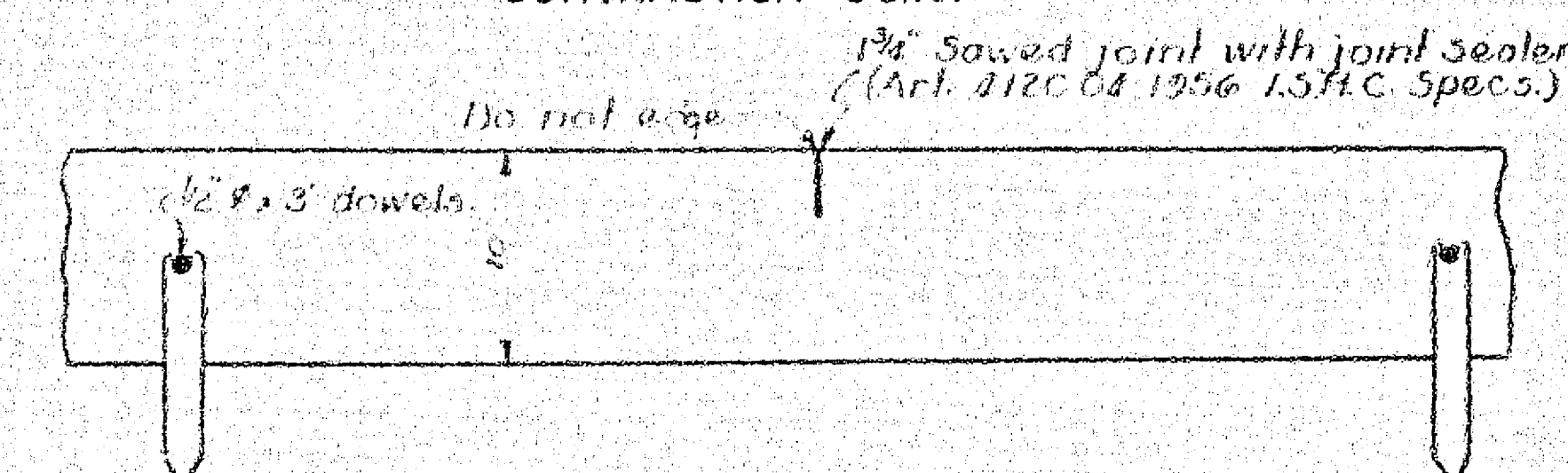


Pressed steel metal Rayway
or bent tie rods to be
held in place by clamps and
glue.



DAYS WORK OR EMERGENCY JOINT

CONTRACTION JOINT



Revised Aug. 5, 1958

Revised April 1958 Details of Railway Crossing

10" UNIFORM (NON-REINFORCED)

24 FT. PAVEMENT (DECEMBER 1957)